



Herald

BETHEL LUTHERAN CHURCH

Volume 89

Number 4

April 2025

PASTOR'S PONDERINGS

We had a wonderful start to our Wednesday night soup and worship for Lent. Of course, the weather on Ash Wednesday was not so great, given the large heavy snowstorm that hit us the night before. But our Ash Wednesday worship service of Zoom went well.

By the way, did you know that for the past three years we have had storms on and around Ash Wednesday? Odd, given the dates were February 22, February 14, and March 5. In 2023 we had 13.7 inches at the airport over three days. In 2024 we got 6.7 inches on Ash Wednesday, and you already remember the 9.5 inches just a few weeks ago. Curious.

Back to our wonderful start for our Wednesday night events during Lent, along with Bread of Life Deaf Lutheran Church (BOLD). We set up for 32 people on March 12 and ended up having 45 people. Tonight (March 19), we will set up for 56, and see what happens. But if you have not joined us yet, please do! We will be eating in the narthex on the west side of the building, followed by worship in the sanctuary. We are doing a series called "Broken and Beloved," created by St. Olaf University. It is very interesting.

Also, please note, that this is not about the numbers of people who attended, but the relationships being built, shared fellowship, and joint worship. We have three ASL interpreters working with us each week, so any communication barriers are attended to, and we are singing call and response songs, so that we

can all "sing" together. I love trying to learn how to sign the songs right along with our BOLD friends.

I find it interesting that 5 years ago this month, we started in a similar fashion with sharing Lent Wednesday nights with BOLD, and then the world shut down with the Covid-19 pandemic. Now, five years later, it seems that God has reset us and is giving us ample opportunity to build community with one another. So, yes, please join us for Wednesdays, April 2 and 9, at 5:30 for soup and 6:15 for worship. (If you see this sooner, we also meet on March 26th.)

Also, please be sure to join us for Holy Week. Palm Sunday will be Bethel only at 10am in our sanctuary. Maundy Thursday will be at Bethel for a meal and worship at 6:30pm, while Good Friday will be at St Peder's (4600 42nd street) at 7pm. These two Holy Week services are shared with BOLD, St Peder's, and Bethel. Finally, Bethel will have our own Easter Breakfast at 9am on Sunday, April 20, followed by Easter Festival Worship. I hope you can all join us! There is room for everyone and your friends and neighbors!

See you soon!

With you, for Jesus,



Pastor Brenda

PS. Families with 5th graders and younger, be sure to come to Bethel at 10am on Saturday, April 19, for our annual Easter Egg Hunt and some great fun!

BERNIE'S MUSIC UPDATE

We start April worshiping and singing for Lent and Palm Sunday with an order of worship – what we call liturgy – named *Unfailing Light*, written by local hymn writer and composer Marty Haugen and Pastor Susan Briehl. It is a modern liturgy with traditional forms written for the Lutheran Campus Ministry at the University of Texas at Austin. It is a contemplative service that lends itself to a season such as Lent, and we first used it last year during Advent.

On Easter Sunday we begin worshiping in the season of Easter with *Now the Feast and Celebration*, another liturgy by Marty Haugen, and a favorite at Bethel. After Pentecost, we will use liturgies by other writers and composers: some newer, some older.

Why do we change liturgies? We change them to observe different seasons of the church year, to learn new ways to praise, pray, and sing, to deepen our understanding and enjoyment of our favorites,

and to incorporate the changes in our congregation in the ways we worship.

Speaking of Easter, it's almost here! If you enjoy singing or playing in worship occasionally, and you want to be part of a larger ensemble, I invite you to sing with the Bethel Choir or ring with the Handbell Choir on Easter Sunday. Handbell Choir rehearses Mondays at 7:00 pm, and Bethel Choir rehearses Wednesdays at 7:00 pm. If you have any questions, please ask me or one of the choir members. We will be happy to tell you more!

Peace and Grace,
Bernie Asher

music2023@bethel-mpls.org



JOIN THE *Easter*



HANDBELL AND VOCAL CHOIRS

All are welcome to join our Handbell and Vocal choirs for our Easter Sunday service.

*Email Bernie for more information:
music2023@bethel-mpls.org*



EASTER BREAKFAST

Sunday, April 20 at 9am

Please RSVP to reserve your spot:

bethel@bethel-mpls.org

(612) 724-3693

or complete

the form here:



EASTER SERVICE

Sunday, April 20 at 10am

EASTER EGG HUNT

Saturday, April 19 at 10am

Join us at Bethel for an Easter Egg Hunt!

Kids up to 5th grade are welcome to join.

Lent **WITH BETHEL**

SOUP AND WORSHIP WEDNESDAYS

March 12, 19, 26, and April 2, 9

5:30pm Soup | 6:15pm Worship

At Bethel with BOLD's congregation.

MAUNDY THURSDAY

Thursday, April 17 at 6:30pm

We will serve a meal and worship with BOLD and St. Peder's congregations at Bethel.

Please let us know if you will attend.

PALM SUNDAY

Sunday, April 13 at 10am at Bethel

GOOD FRIDAY

Friday, April 18 at 7:00pm

We will have worship with BOLD and St.

Peder's congregations at St. Peder's Church

4600 E 42nd Street, Minneapolis.



BETHEL LUTHERAN CHURCH | 4120 17th Ave. S., Minneapolis, MN | bethel-mpls.org

MICHELLE'S GRANTS UPDATE

Just before writing this article, I prepared my letter of resignation from the Grant Manager position here at Bethel Lutheran Church, effective April 29, 2025. I will be preparing for Jester to graduate from high school and for their transition to college, and ramping up to be the lead pastor at Spirit Garage to cover Pastor Holly's sabbatical leave over the summer of 2025.

Thank you for the opportunities for professional and personal development in the past three years (almost exactly!) here at Bethel. I have enjoyed working with Pastor Brenda, the other staff members, and the Bethel community. I appreciate Bethel's willingness to explore together where God may be leading. Thank you for trying experiments, for speaking honestly, and for being willing to say "This doesn't work for us," or saying "This is great!"

I am preparing a Lenten message around the

story of the Road to Emmaus (Luke 24:13-35), noticing the many ways that this story shows up as a consistent thread in my journey of faith. Walking together with Pastor Brenda and the Bethel community, sorting out where God is leading us, and working through our questions and curiosities together has been an Emmaus-like gift to me. I am grateful for this time journeying with Bethel Lutheran Church and I will continue to hold you in my prayers.

Peace and Joy to you,

Rev. Michelle Lewis

grantmanager@bethel-mpls.org
651-226-6804



Garden of Memories

LILIES AND HYDRANGEAS WILL BE ORDERED TO REMEMBER OUR LOVED ONES THIS EASTER.

To add your loved ones to our list, please complete the form using the QR code, complete a Garden of Memories envelope before or after worship, or email the office at bethel@bethel-mpls.org. Checks for memorials can be made to Bethel Lutheran Church.



EASTER BREAKFAST

Sunday, April 20 at 9am

Please RSVP to reserve your spot:

bethel@bethel-mpls.org

(612) 724-3693

or complete

the form here:



MAUNDY THURSDAY

Thursday, April 17 at 6:30pm

Please RSVP to reserve your spot:

bethel@bethel-mpls.org

(612) 724-3693

or complete

the form here:



FEASIBILITY UPDATE

It's been another month of "fishing" for your Feasibility Study Team. One "fish" we potentially had "on the line" (El Colegio Charter School) is likely no longer a viable "catch" for a future long-term partnership with Bethel, but we'll continue to "cast in that lake." We have recently had some "nibbles" from a couple of affordable housing development organizations, one that we had "a bite" from previously and another that has just recently found out that we have "a line in the water." We are excited about getting more information and potentially meeting with these organizations. We will share any "fish stories" with you as they develop, and you as Bethel members will definitely have a say in any "keepers" before we "reel them in."

Thanks for your prayers and support. Please contact one of our committee members if you know of a good "fishing hole." (And thanks for enduring the fishing quips.)

Thank you!

Laurie Hauge, Ann Allison, Gene Rodi, Don Olson, Pastor Brenda, and Jim Lair, Chair
feasibility@bethel-mpls.org

Join us for our free **COMMUNITY FUN NIGHTS**



MAY FUN NIGHT

Thursday, May 8, 5:30pm-7:30pm

Free Meal 5:30-6:15pm: Panini Sandwiches

Activity: Make PB&J sandwiches for
Native American Community Clinic



BETHEL LUTHERAN CHURCH

4120 17th Ave. S., Minneapolis, MN

bethel-mpls.org



Event sponsored in partnership with Thrivent Financial. Live Generously!

MINISTRY CALENDAR

Sunday	Monday	Tuesday	Wednesday
30 10:00am Bethel Worship 10:15am Faith Trek Sunday School 11:00am Fellowship Time 1:00pm Pentecostal Casa Worship 5:30pm Minneapolis Jo 7:00pm El Nuevo Despertar AA	31 Bethel Office Closed 6:00pm Open Gym 7:00pm Bethel Bell Choir 7:00pm Bridge to Shore AA 7:00pm El Nuevo Despertar AA	1 7:00am AA Meditation 9:30am OA HOW Meeting 9:30am The Curiosity Crew School 10:00am NHS Exercise 11:00am NHS 500 Cards Group 11:30am NHS Counseling 6:30pm Scout Troop 38 7:00pm El Nuevo Despertar AA 7:00pm Pentecostal Casa Music	2 10:00am NHS Women's Art G 10:00am NHS Yoga 12:00pm Hybrid Bible Study 5:30pm Lent Soup and Wors 6:00pm Open Gym 6:30pm Continuous Action Av 6:30pm Nokomis Quilters 7:00pm Bethel Choir Rehears 7:00pm El Nuevo Despertar A
6 10:00am Bethel Worship 10:15am Faith Trek Sunday School 11:00am Fellowship Time 1:00pm Pentecostal Casa Worship 5:30pm Minneapolis Jo 7:00pm El Nuevo Despertar AA	7 Bethel Office Closed 10:00am CANMN Distribution 7:00pm Bethel Bell Choir 7:00pm Bridge to Shore AA 7:00pm El Nuevo Despertar AA	8 7:00am AA Meditation 9:30am OA HOW Meeting 9:30am Operation Love Quilters 9:30am The Curiosity Crew School 10:00am NHS Exercise 10:00am Staff Meeting 11:00am NHS 500 Cards Group 11:30am NHS Counseling 1:00pm NHS Grief Support Group 6:30pm Mission Council 6:30pm Scout Troop 38 7:00pm El Nuevo Despertar AA 7:00pm Pentecostal Casa Music	9 10:00am NHS Women's Art G 10:00am NHS Yoga 11:30am Mpls Community Ec 12:00pm Hybrid Bible Study 5:30pm Lent Soup and Wors 6:30pm Continuous Action Av 7:00pm Bethel Choir Rehears 7:00pm El Nuevo Despertar A
13 Bethel Choir Sings PALM SUNDAY 10:00am Bethel Worship 10:15am Faith Trek Sunday School 11:00am Fellowship Time 11:30am Board of Administrators 1:00pm Pentecostal Casa Fellowship 1:00pm Pentecostal Casa Worship 5:30pm Minneapolis Jo 7:00pm A Holy Experiment 7:00pm El Nuevo Despertar AA	14 Bethel Office Closed 10:00am CANMN Distribution 2:00pm Feasibility Study Team 7:00pm Bethel Bell Choir 7:00pm Bridge to Shore AA 7:00pm El Nuevo Despertar AA 7:00pm Troop 38 Committee Meeting 8:00pm Bridge to Shore AA - Meeting	15 7:00am AA Meditation 9:30am OA HOW Meeting 9:30am The Curiosity Crew School 10:00am NHS Exercise 11:00am NHS 500 Cards Group 11:30am NHS Counseling 6:30pm Scout Troop 38 7:00pm El Nuevo Despertar AA 7:00pm Pentecostal Casa Music	16 10:00am NHS Women's Art G 10:00am NHS Yoga 11:30am Mpls Community Ec 12:00pm Hybrid Bible Study 6:30pm Continuous Action Av 7:00pm Bethel Choir Rehears 7:00pm El Nuevo Despertar A 7:30pm Continuous Action Le
20 Bethel Bells and Choir Perform EASTER SUNDAY 9:00am Easter Breakfast 10:00am Bethel Worship 10:15am Faith Trek Sunday School 11:00am Fellowship Time 1:00pm Pentecostal Casa Worship 5:30pm Minneapolis Jo 7:00pm El Nuevo Despertar AA	21 Bethel Office Closed 10:00am CANMN Distribution 7:00pm Bridge to Shore AA 7:00pm El Nuevo Despertar AA	22 7:00am AA Meditation 9:30am OA HOW Meeting 9:30am The Curiosity Crew School 10:00am NHS Exercise 10:00am Staff Meeting 11:00am NHS 500 Cards Group 11:30am NHS Counseling 6:30pm Scout Troop 38 7:00pm El Nuevo Despertar AA 7:00pm Pentecostal Casa Music	23 10:00am NHS Women's Art G 10:00am NHS Yoga 11:30am Mpls Community Ec 12:00pm Hybrid Bible Study 6:30pm Continuous Action Av 7:00pm Bethel Choir Rehears 7:00pm El Nuevo Despertar A
27 Bethel Choir Sings 10:00am Bethel Worship 10:15am Faith Trek Sunday School 11:00am Fellowship Time 1:00pm Pentecostal Casa Fellowship 1:00pm Pentecostal Casa Worship 5:30pm Minneapolis Jo 7:00pm A Holy Experiment (AT ATONEMENT, NOT BETHEL) 7:00pm El Nuevo Despertar AA	28 Bethel Office Closed 10:00am CANMN Distribution 7:00pm Bethel Bell Choir 7:00pm Bridge to Shore AA 7:00pm El Nuevo Despertar AA	29 7:00am AA Meditation 9:30am OA HOW Meeting 9:30am The Curiosity Crew School 10:00am NHS Exercise 11:00am NHS 500 Cards Group 11:30am NHS Counseling 1:00pm The Curiosity Crew School 6:30pm Scout Troop 38 7:00pm El Nuevo Despertar AA 7:00pm Pentecostal Casa Music	30 10:00am NHS Women's Art G 10:00am NHS Yoga 11:30am Mpls Community Ec 12:00pm Hybrid Bible Study 6:30pm Continuous Action Av 7:00pm Bethel Choir Rehears 7:00pm El Nuevo Despertar A

DAR — APRIL 2025

Day	Thursday	Friday	Saturday
Group hip A sal AA	3 9:00am NHS Foot Care 9:30am NHS Nurse Is In/Blood Pressure 10:00am NHS Exercise 11:00am NHS Senior Discussion Group 3:00pm CANMN Distribution 6:45pm Seward Concert Band Rehearsal 7:00pm BNA Board Meeting 7:00pm El Nuevo Despertar AA 7:00pm Up the Creek AA 8:00pm Up the Creek AA Meeting	4 9:30am Curiosity Crew STEAM Day 10:00am Curiosity Crew STEAM Day 5:30pm Family Fun Night Bethel and BOLD 6:00pm Pentecostal Casa Worship 7:00pm El Nuevo Despertar AA	5 9:00am AA Amigos 11:00am CANMN Distribution 7:00pm El Nuevo Despertar AA 7:00pm El Nuevo Despertar AA
Group d--Gentle Yoga hip A sal AA	10 9:30am NHS Nurse Is In/Blood Pressure 10:00am NHS Exercise 11:15am NHS Lunch and Bingo/Movie 3:00pm CANMN Distribution 6:00pm Girl Scout Troop 18896 - Molly Rosa 7:00pm El Nuevo Despertar AA 7:00pm Up the Creek AA	11 6:00pm Pentecostal Casa Worship 7:00pm El Nuevo Despertar AA	12 9:00am AA Amigos 11:00am CANMN Distribution 5:00pm Casa Church Anniversary 7:00pm El Nuevo Despertar AA
Group d--Gentle Yoga A sal AA eadership Meeting	17 9:30am NHS Nurse Is In/Blood Pressure 10:00am NHS Exercise 11:00am NHS Support As We Are 3:00pm CANMN Distribution 6:30pm Bethel's Maundy Thursday Worship with BOLD & St. Peder's 7:00pm El Nuevo Despertar AA 7:00pm Up the Creek AA Herald Deadline 12:00pm	18 6:00pm Pentecostal Casa Worship 7:00pm El Nuevo Despertar AA 7:00pm Good Friday Worship at St. Peder's Church	19 9:00am AA Amigos 10:00am Bethel's Easter Egg Hunt 11:00am CANMN Distribution 7:00pm El Nuevo Despertar AA
Group d--Gentle Yoga A sal AA	24 9:30am NHS Nurse Is In/Blood Pressure 10:00am Mpls Comm. Ed--Watercolor Class 10:00am NHS Exercise 11:00am NHS Caregiver Support Group 12:30pm Diabetes Support Group 3:00pm CANMN Distribution 6:00pm Girl Scout Troop 18896 7:00pm El Nuevo Despertar AA 7:00pm Up the Creek AA	25 6:00pm Pentecostal Casa Worship 7:00pm El Nuevo Despertar AA	26 9:00am AA Amigos 10:30am Vendor Fair 11:00am CANMN Distribution 7:00pm El Nuevo Despertar AA
Group d--Gentle Yoga A sal AA	1 9:00am NHS Foot Care 9:30am NHS Nurse Is In/Blood Pressure 10:00am Mpls Comm. Ed--Watercolor Class 10:00am NHS Exercise 11:00am NHS Senior Discussion Group 3:00pm CANMN Distribution 7:00pm BNA Board Meeting 7:00pm El Nuevo Despertar AA 7:00pm Up the Creek AA 8:00pm Up the Creek AA Meeting	2 12:00pm Troop 38 Plant Sale Set-up 6:00pm Pentecostal Casa Worship 7:00pm El Nuevo Despertar AA	3 8:00am Troop 38 Plant Sale 9:00am AA Amigos 11:00am CANMN Distribution 7:00pm El Nuevo Despertar AA

BIBLE STUDY WITH PR BRENDA

Wednesdays at 12pm

Online meeting room:

<https://us02web.zoom.us/j/81542792093>



And in-person in the Fireside Room.

4/2	Luke 22:31-62
4/9	Luke 19:28-48
4/16	Acts 10:34-43; Luke 24:1-12
4/23	Psalm 104:10-15; Matthew 6:25-29
4/30	John 21:1-19

CHURCH STAFF AND LEADERSHIP

Rev. Brenda Froisland, Pastor:

pastor@bethel-mpls.org

Operations Manager:

Regan Saunders

bethel@bethel-mpls.org

Music:

Bernie Asher, Music Director

music2023@bethel-mpls.org

Anne Phillips, Musician

musician2023@bethel-mpls.org

Finance Coordinator:

Teresa Klotz

assttreas@bethel-mpls.org

Assistant Custodians:

Rachel Allison, Kristian Ask, John Fleming,

Michael Hauge, Jester Lewis, Bill Shy,

Katie Simons, Franklin Wohnoutka

Grant Manager:

Rev. Michelle Lewis

grantmanager@bethel-mpls.org

Visitation Minister

Susan Johnson

Office Assistant:

Marcia Bellinger

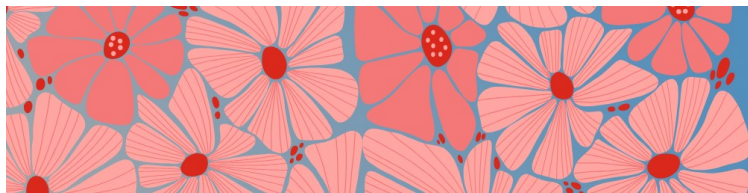
office@bethel-mpls.org

For a full list of our staff and leadership members, please visit our website:



SUNDAY SERVERS

Date	Assisting Minister	Lector	Cantor	Sacristy	Ushers	Streaming	Hospitality	Altar Guild
4/6	Ann Allison	Darlene Olson	Dean Anderson	Stephanie Johnson	Norris	Gene and Ted	Alice Evenson	Barb and Barb
4/13	Anna Olsen	Don Olson	Kristin Cleary	Marilyn Newborg	Dean and Dave S	Gene and Ted	Sharon Rodi	Barb and Barb
4/20	Sharon Rodi	Laurie Hauge	Bernie Asher	Clarice Lovstuen	Susan and Jerry	Gene and Ted	Joan Bargman	Barb and Barb
4/27	Susan Johnson	Libby Krogh	Sarah Berke	Marilyn Newborg	Dave K and Norris	Gene and Ted	Laurie Hauge	Barb and Barb



APRIL

BIRTHDAYS AND ANNIVERSARIES

Birthdays

Heidi Nordine	1
Karen Warwick	1
Janet Anderson	4
Rachel Allison	4
Julie Ness	8
Brenda Froisland	19
Linda Fraizer	21
Frederick Cross	22
Josi Alberts	23
Ray Pikkarainen	24
Joan Bargman	29
Joni Hodgman	29

Anniversaries

Brenda Froisland and Mary Chilvers	8
Jeff and Jody Alberts	13
Jeff and Michelle Kevelin	24

If your birthday or anniversary is missing or incorrect, please let the office know so we can update our records! Thank you!

BETHEL LUTHERAN CHURCH
AND BOLD PRESENT

Family Fun Night

An evening of
games and activities
in Bethel's Gym

BETHEL LUTHERAN CHURCH
4120 17TH AVE. S.
Friday, April 4
5:30-7:30pm
Interpreters will be provided.
BETHEL@BETHEL-MPLS.ORG

Easter Egg Hunt

SATURDAY, APRIL 19 AT 10AM
JOIN US AT BETHEL FOR AN EASTER EGG HUNT!
KIDS UP TO 5TH GRADE ARE WELCOME TO JOIN.

 **BETHEL LUTHERAN CHURCH** | 4120 17th Ave. S., Minneapolis, MN | bethel-mpls.org

PRAYER list...

PRAY FOR BETHEL MEMBERS

Anna Olsen	Karen McBride
Jerry Johnson	Sharon Phillips
Darlene Olson	Laurel Jorgensen
Leonard Phillips	Kevin Hoover
Gert Carlson	Gloria Condon
Jan Walker	Hundt Family
David and Sue	Puckett Family
Dorumsgaard Ayers	Doris Christianson
Larissa Hoover	Darrell Dahl
Libby and Dave Krogh	Walker Family
Warwick Family	Cannon Family
Pikkarainen Family	

MORE PEOPLE OF GOD

- USAID workers around the world
- Victims of natural and human disasters
- People of Ukraine, Israeli Citizens, and Palestinians in Gaza
- All of us regarding COVID, RSV, Flu, Mpox
- Black, Brown, Indigenous, and Asian Lives
- People without homes
- Refugees, Migrants and Asylum Seekers
- People dying due to gun violence

MEMBERS, RELATIVES AND FRIENDS IN THE SERVICE

Katrel Bishop (Pr B's nephew)
Adam Froisland (Pr B's nephew)
Evan Harrison (Pr B's great nephew)

PRAY FOR OUR RELATIVES AND FRIENDS

The Family of Jon Scott (Kelly C's friend)
Marcus (Froisland Family friend)
The Family of Kay Saunders (Barb's sister-in-law)
Amber (Kelly Chilver's friend)
Zach (Barb and Bob Wandberg's grandson)
Julian (Jan Walker's friend)
Kevin and Sue Johnson (Les' brother and sister-in-law)
Beth (Dan Hauge's sister)
Kristian (Pr B's friend)
Jane (Ann Allison's sister)
Kathy (Krogh Family friend)
Steve (Pr B's brother)
Michael (Marilyn Newborg's brother)
Donovan (Angel Cannon's father)
Ian (Pr B's friend)
Laura (Sue Dorumsgaard Ayers' friend)
Rita (Sharon Phillip's friend)
Calvin (Angel Cannon's godfather)
Laura (Lisa Chovan Spence's sister)
Wayne (Karen Warwick's dad)
Trent and Michelle (Norma's Family)
Darlene (Jeff Alberts' mom)
Susan (Mike Condon's sister)
John (Kathy Hundt's brother-in-law)
Andrea (Mona Falk's daughter)

BETHEL'S MISSION PARTNERS

- ◆ Bancroft Neighborhood Association ◆ Bread of Life Deaf Lutheran Church (BOLD)
◆ ReconcilingWorks ◆ Casa de Oracion - Pentecostal
◆ Mpls Area Synod ◆ Nokomis Healthy Seniors ◆ CANMN

For additions or revisions to the Prayer List, please contact
Pastor Brenda: pastor@bethel-mpls.org
or the Office: bethel@bethel-mpls.org
(612) 724-3693

BOARD OF ADMINISTRATORS

Greetings from your Board of Administrators!

It was wonderful to gather together as a congregation for our Annual Meeting on March 16th. Together, we heard reports on the state of Bethel, set out a budget for the year ahead, celebrated the hard work of staff and volunteers, and elected new leaders. Thanks again to all who make Bethel work -- if you're reading this, I mean you.

The Board of Administrators also met for our regular monthly business on March 18th. We heard a good report about finances for the first two months of 2025, discussed recent happenings, heard more about the possibilities the Feasibility Team is exploring, and affirmed recommendations from the Mission Council to support community needs with the MN Strong 4 Trans Youth coalition and Mental Health Connect. The personnel

committee is actively conducting annual reviews for staff. We discussed ways to support staff as they stay busy as always, managing activities in the building, occasional snow clearance, and ongoing relationship-building.

The Board is also seeking one more member for an open "at-large" seat; if you are interested in learning more about serving in this role for a 14-month partial term, please reach out!

In this Lenten season, it is important to take time for quiet reflection and to appreciate simple sustenance. We look forward to gathering over soup on Wednesdays with many of you in the weeks before our next board meeting on Palm Sunday.

In peace and service,

Sarah Berke

On behalf of the Board

MISSION COUNCIL REPORT

At our March meeting the Mission Council reviewed the 2024-25 2nd Saturday Concert Series. The series continues to be popular and successful, with the exception of one due to inclement weather. We are grateful for the musicians and community members who helped to make the 2nd Saturday Concert Series thrive.

The February 13th Community Fun Night "was a hoot," according to one attendee. Participants decorated Valentine cookies and made origami hearts. Thank you again to all those who contributed to its success. The May 2025 Community Fun Night activity will be making sandwiches for those in need.

Susan Johnson

On behalf of the Mission Council



Herald

BETHEL LUTHERAN CHURCH

4120 17th Ave. S., Minneapolis, MN, 55407

bethel-mpls.org | 612-724-3693

In gratitude, Bethel Lutheran Church amplifies God's grace, nourishes all creation, reaches out, and builds community.

- We are a Reconciling in Christ Congregation.
- Why a Public Church? To impact and enhance the community so that everyone feels a sense of love and belonging.

Monday – Friday,
June 16-20, 2025
9a - 4p

Hosted by
Diamond Lake Lutheran Church
Sponsored by more than a dozen
Minneapolis congregations

Programming for entering:

K-4th grade

5th-6th grades

7th-8th grades

High School Leaders



A progressive
ecumenical
day camp
experience
offering faith
formation in a
fun, safe,
Christ
centered and
relational
setting. Worship,
crafts, music,
and games
make for a fun
and
meaningful
week of
beloved
community.



Register here:

(<https://www.smplsdaycamp.org/>)